

0-4-2

Closed Cab

to fit the On30 Bachman Porter

Here is another cab kit designed to fit another On30 Bachman product. this kit is laser cut in 1/32 and 1/64 plywood. We chose to use ACC as our choice of adhesive for most of the assembly, woodworkers glue could also be used when assembling the frame parts. Our choice of paint is Floquil solvent paint, although the model photos don't show the cab painted, we did use Floquil Grimy Black and engine black on some of our other cabs. The glazing is laser cut for ease of assembly and the trim sheet has an adhesive backing to speed assembly. The glazing is installed from the inside and is laser cut. Also, all of the corners or edges are tabbed to precisely align the parts. As always, read through the instructions before building to familiarize yourself with the assembly steps.

Use the parts drawing to identify the parts....

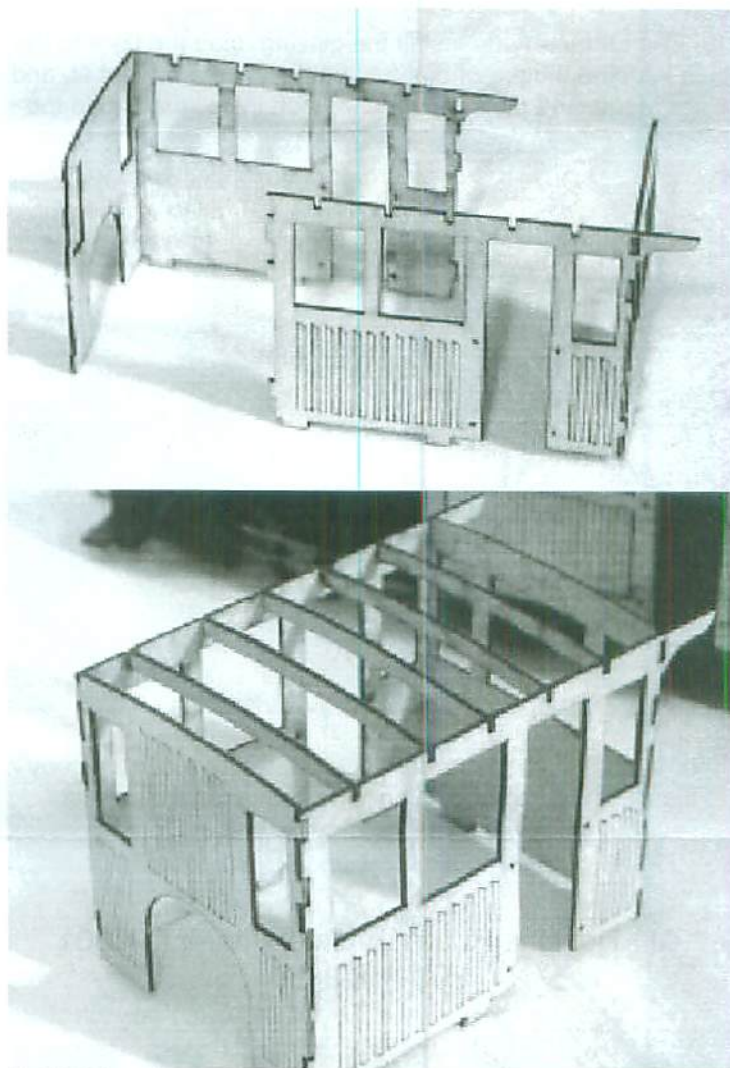


Chassis Prep....

1. Remove the cab from the chassis by sliding a hobby blade between the cab and the floor. It should separate quite nicely without any damage to either the floor or cab. The tab slots need to be clear of the tabs for the wood cab to fit.

Assembly...

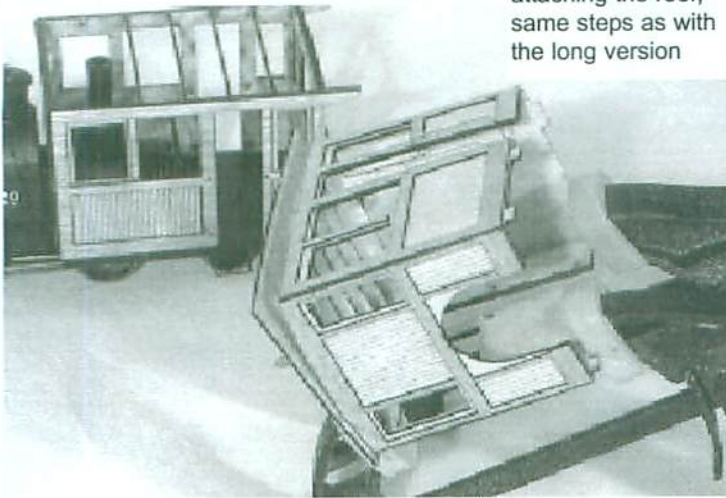
1. Start by trimming the 4 wall sections from the fret. Sand the edges where the tabs were trimmed.
2. Glue the LH side wall and the back wall edges together. Also glue the RH wall to the front wall. Keep the walls square to each other as you do this step. See photo
3. After the glue has set, give it two or 3 minutes when using ACC, glue the LH wall assembly to the front wall assembly and then the RH wall to the back wall keeping it all square as you do this step. when dry, test fit the cab to the chassis, the tabs should drop right into the slots on the floor. Leave the cab on the chassis for the next step.
4. Next add the roof ribs, again, see the photo. Remove the cab from the chassis when dry.



5. Add the trim to the front and back walls. Test fit the trim before removing the backing for fit, then peel off the backing and apply to the sides. The adhesive will not stick permanently until you press it tight to the walls so if you don't get it positioned right the first try you can still move it around a bit. Once satisfied with position, place the cab and trim face down and press hard from the inside. Use the top of the wall and the boiler opening to help align the front trim. Use the top and sides to align the back wall trim. See photo next page.
6. Now add the side trim in the same manner using the doorway and top of the trim to align it with the side walls.
7. Add the trim boards to the top of the end wall trim and then to the sides.
8. The grabs are next, remove the two grabs from the plastic cab and insert into the laser holes in the wood cab, you may have to drill the laser holes with a #76 drill bit. Insert the grabs into the holes and ACC from the inside.

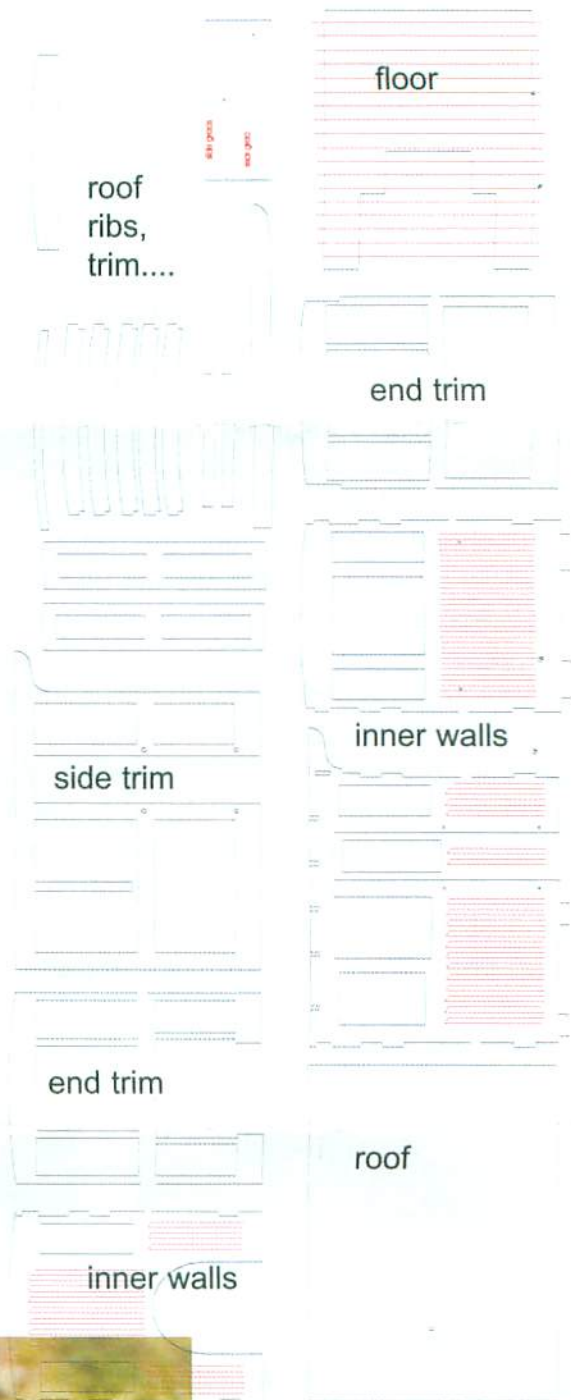
9. Finally, let's do the roof. Soak the roof in warm water for one or two minutes, then wrap the roof around a soda can and rubber band the roof to the can and let dry over night.
10. Glue the roof to the roof ribs and let dry.
11. Add the rear roof rib between the trim extensions at the back of the cab, this part will need to be trimmed to fit.
12. Remove the whistle from the original cab roof and put it in the hole in the cab roof. Glue in place. Then add the window sills. see drawing, they fit at the bottom of the side windows.
13. Paint the cab and install the glazing, glue the floor to the loco keeping it clear of that fuel bunker, it is a perfect fit, and clear of the side slots for the cab, then install the cab in the slots.

this view shows attaching the roof, same steps as with the long version



Send an SSAE for a current price list, \$6 for a current copy of the illustrated color catalogue or find us on the web at www.bantamodelworks.com
Thanks for your support!

411 Hopkins Road, Dummerston, VT 05301
802-258-3869



The B. BUILDING & STRUCTURE Co.
banta modelworks